

Notes on Historical GPA Data

The attached charts present historical data on average grades for colleges and programs on the Twin Cities campus with significant undergraduate enrollments.

GPA by College of Registration

The heavy line reports the average GPA earned by all students registered in the college or program indicated. Note several things about this line:

We were unable to find data for Fall 1971 and Fall 1984 in the University Archives.

The heavy line shows grades earned by students in college X not grades given by instructors in college X. For example, the grade for a CLA student who takes a course in IT will be reflected in the heavy line in the CLA chart not the IT chart.

With one exception the heavy lines show grades earned by undergraduate and adult special students. There are so few adult special students, that for most colleges the data is clearly dominated by undergraduate students. The exception is the College of Education where the data includes undergraduate and an increasing number of graduate students since the mid 1980s as graduates students in the College of Education are registered in the College of Education while graduate students in most other colleges, e.g., CLA or IT departments, are registered in the Graduate School.

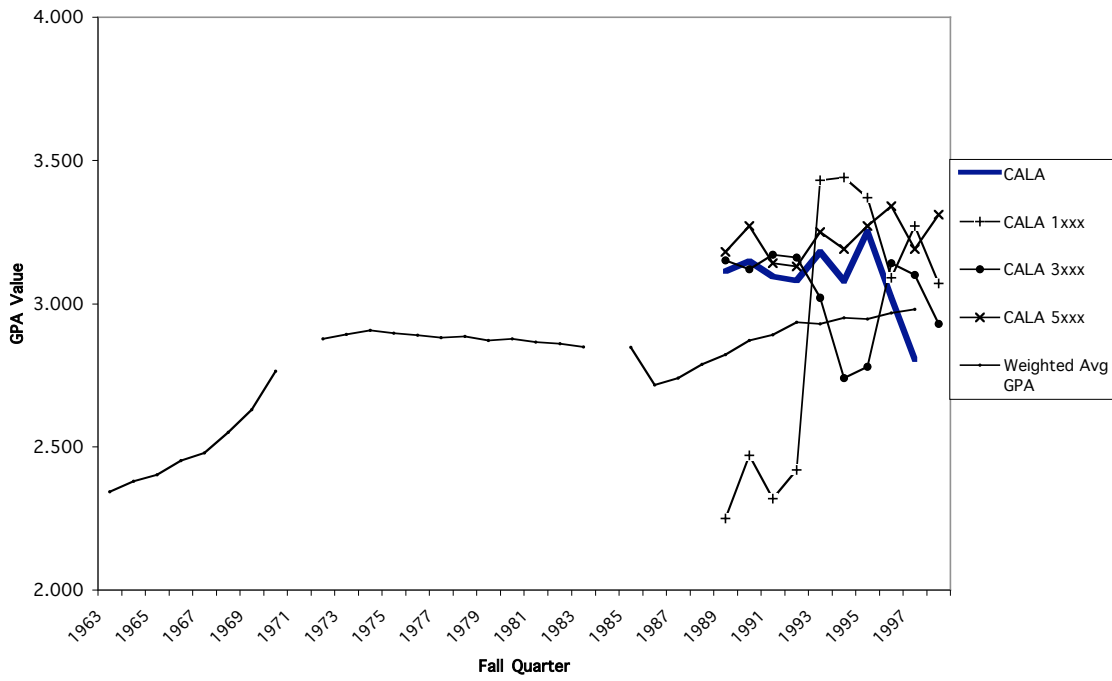
For most colleges GPA by College of Registration is shown for Fall 1963 through Fall 1997. Several units did not exist as separate administrative units until sometime after 1963. In these cases, the heavy line starts as soon as separate data were reported.

Each chart also includes a lighter line labeled “Weighted Avg GPA.” This line is the weighted average across all units of “GPA by College of Registration” where the weights are equal to Fall quarter undergraduate enrollment averaged over the period Fall 1989 to Fall 1998.

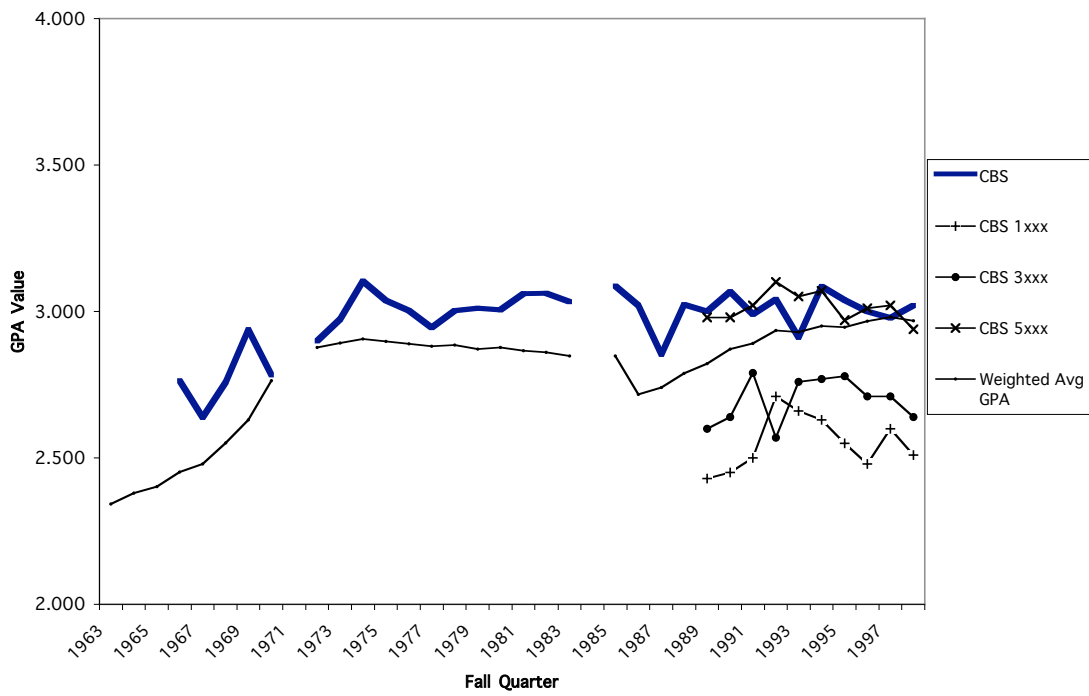
GPA by Designator

The shorter lines that extend from 1989 through 1997 come from data on GPA by designator. Data on grades by designator has been aggregated to colleges. For these lines, the grade given to a CLA student in an IT course will be reflected in the IT chart, not the CLA chart. Grades have been weighted by the number of students and the credits in each course.

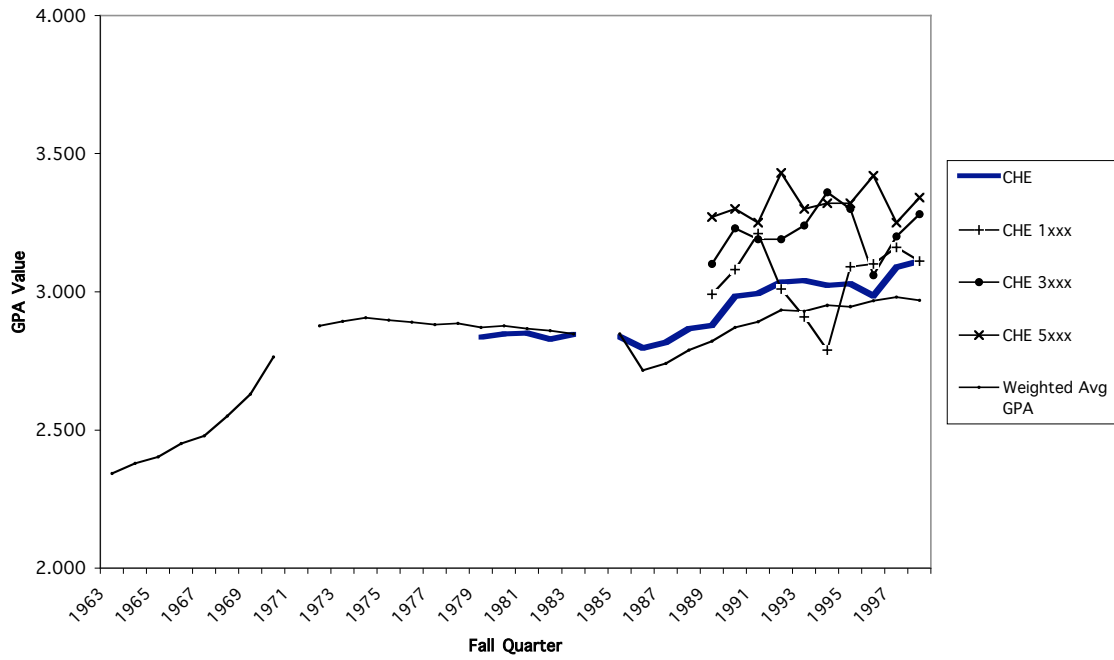
College of Architecture and Landscape Architecture



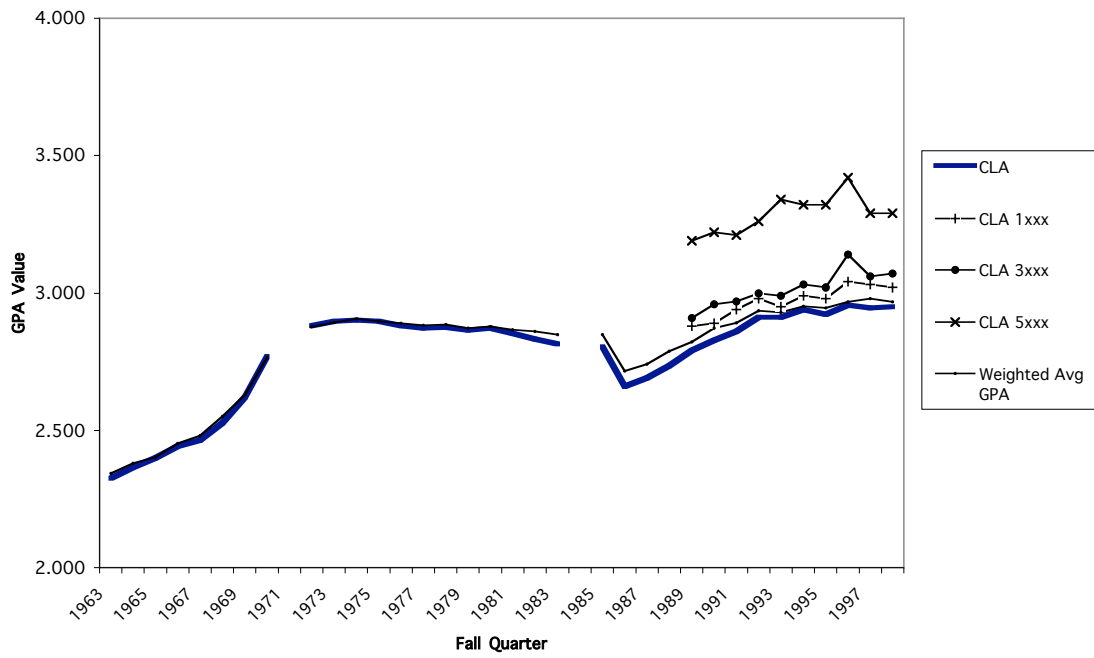
College of Biological Sciences



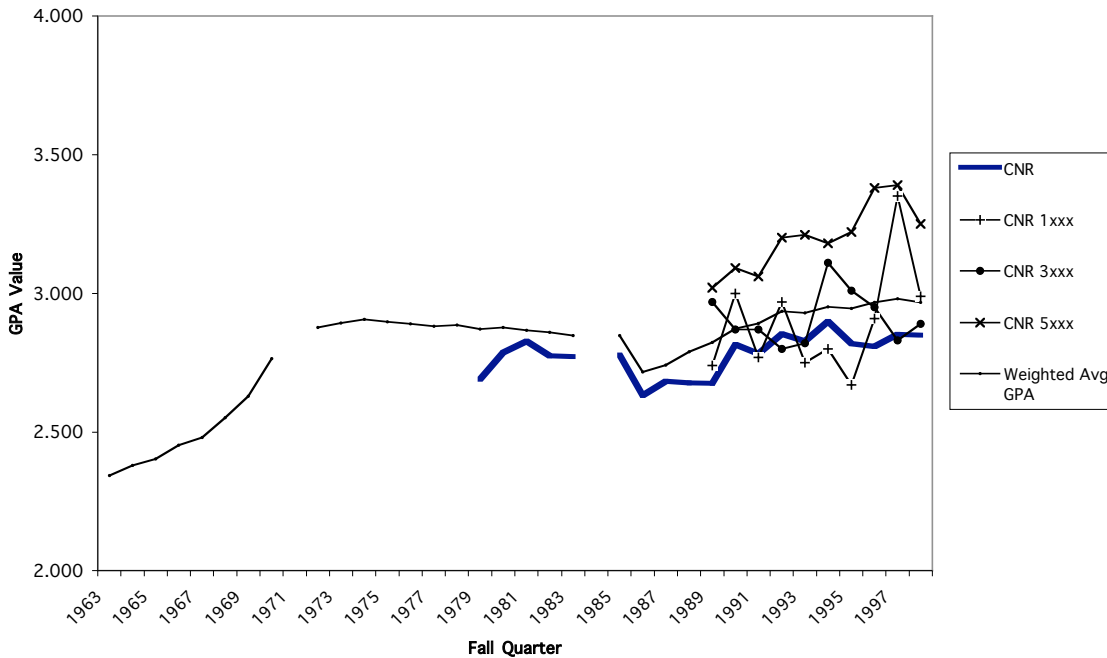
College of Human Ecology



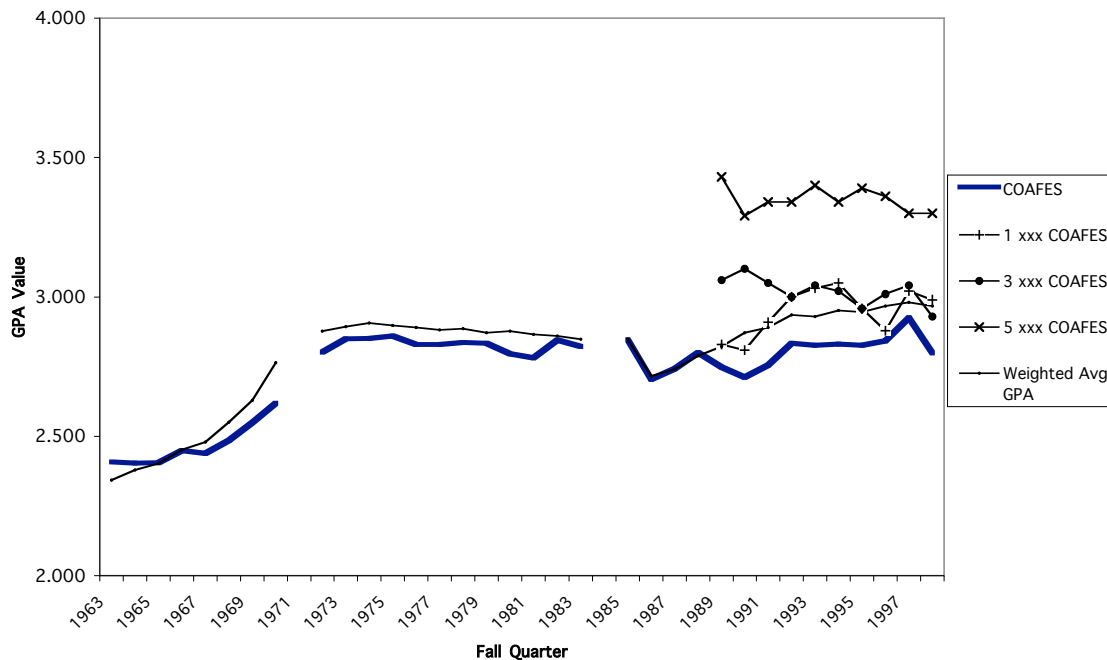
College of Liberal Arts



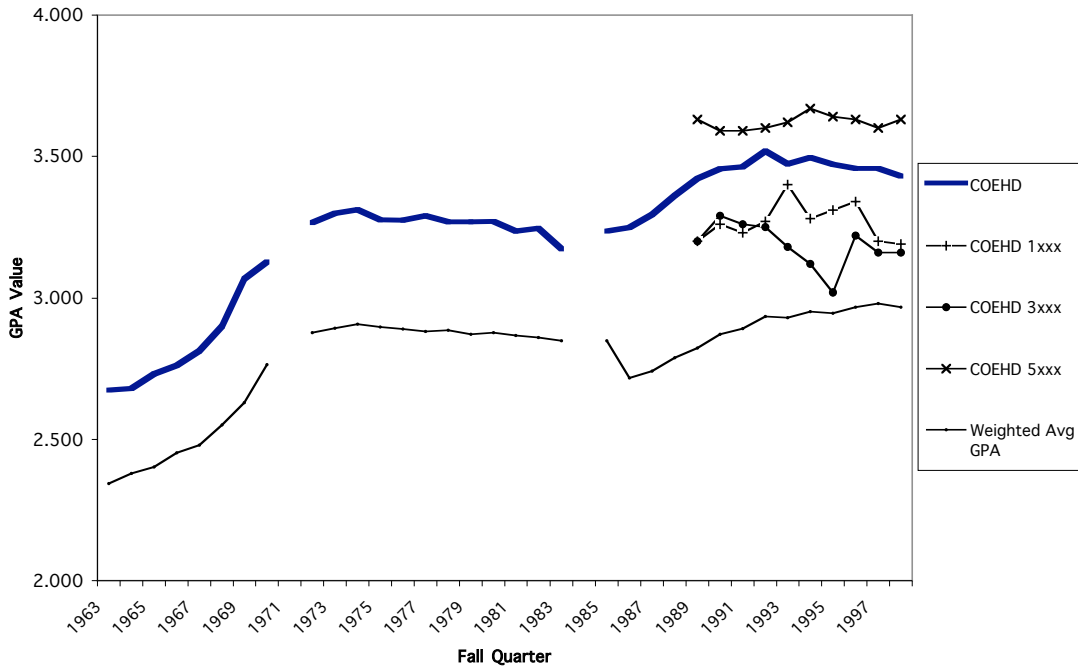
College of Natural Resources



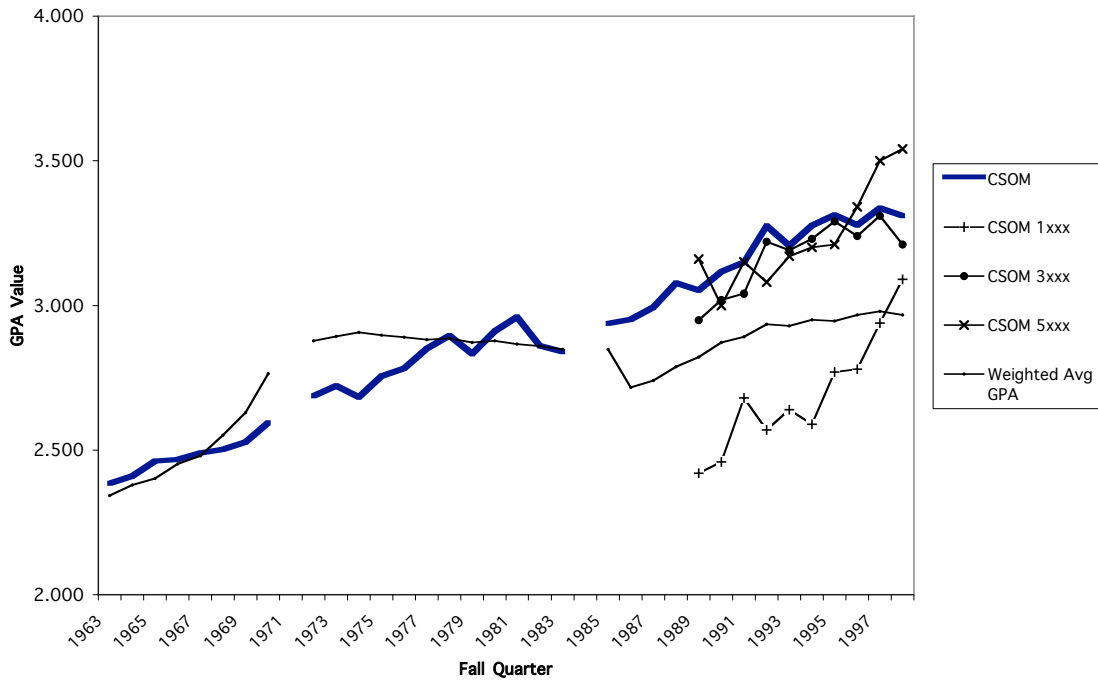
College of Agricultural, Food & Environmental Sciences



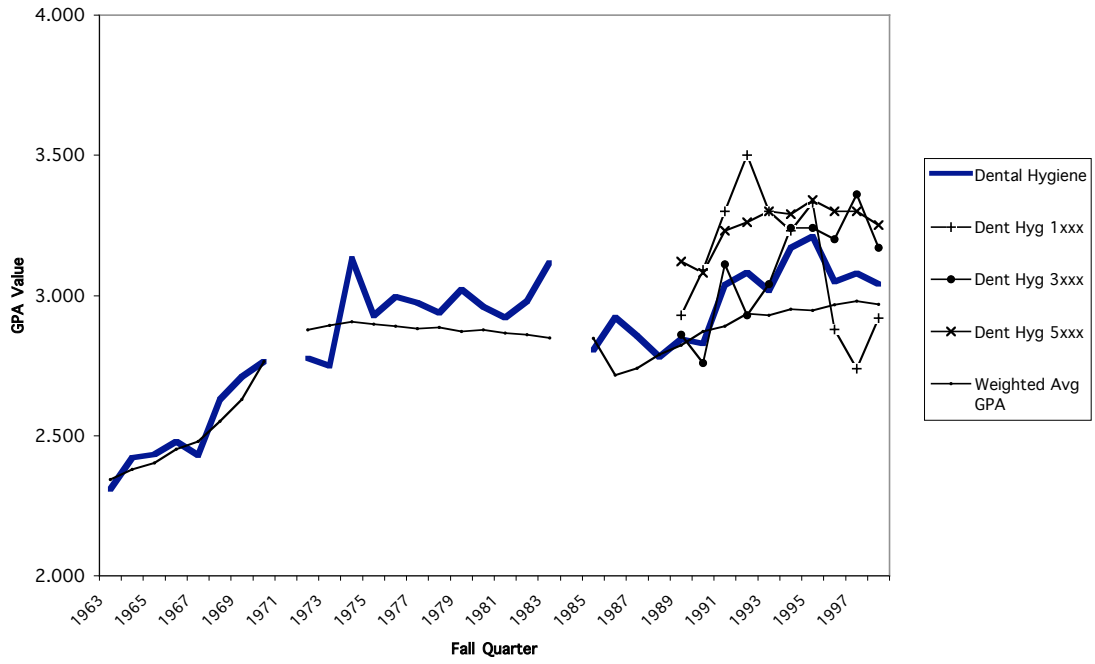
College of Education and Human Development



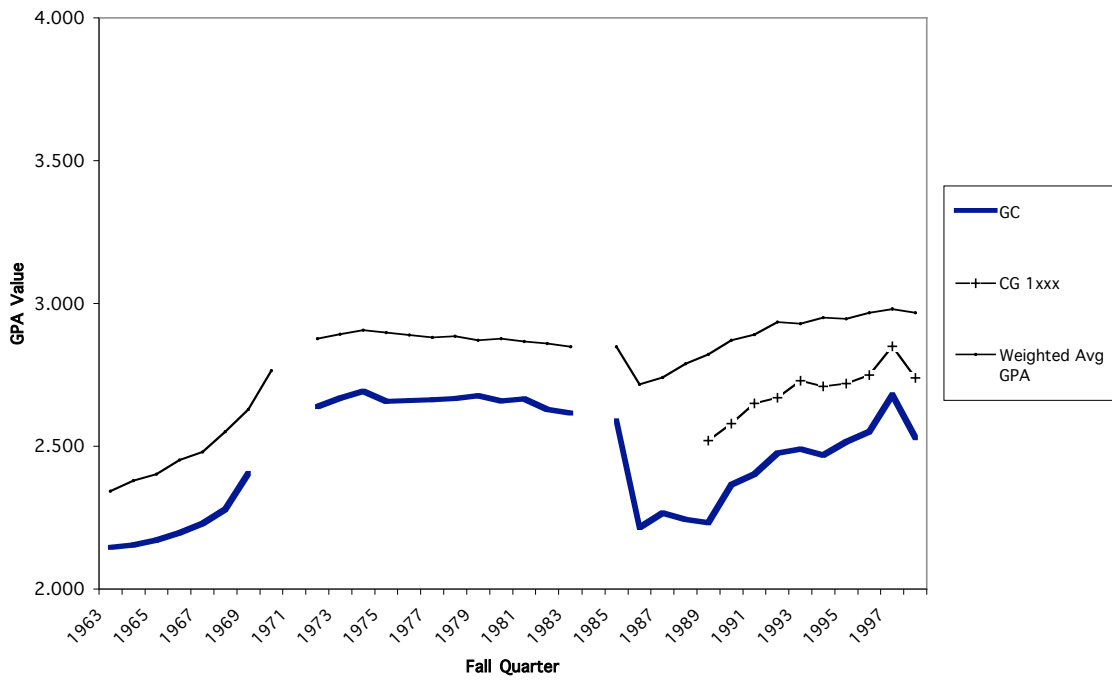
Carlson School of Management



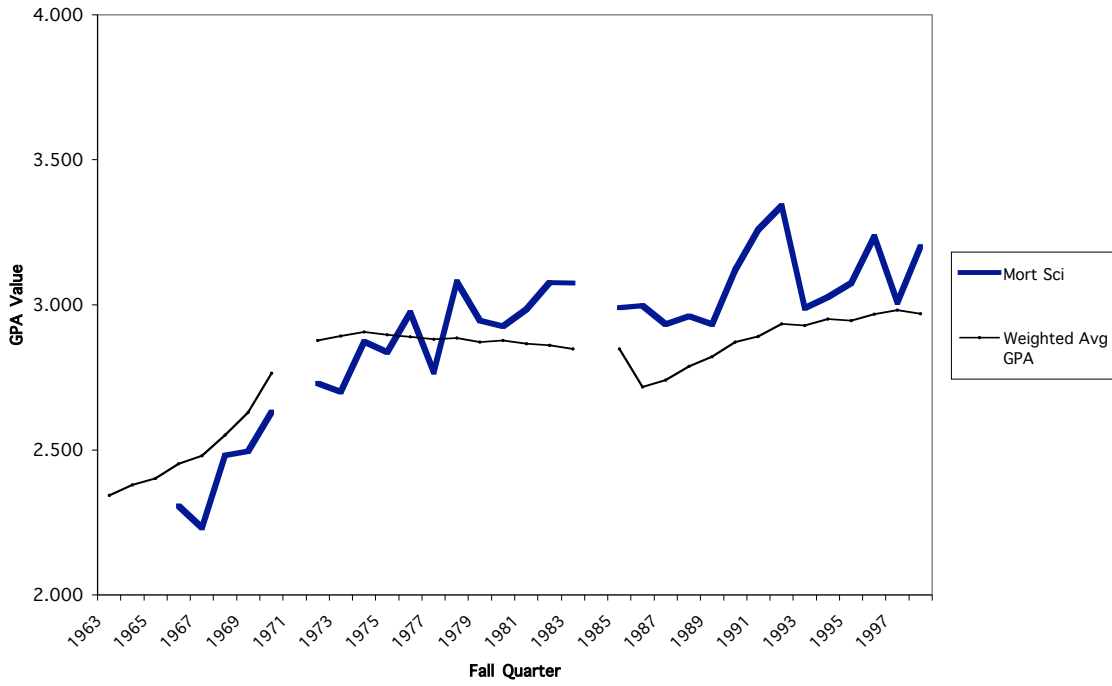
Dental Hygiene



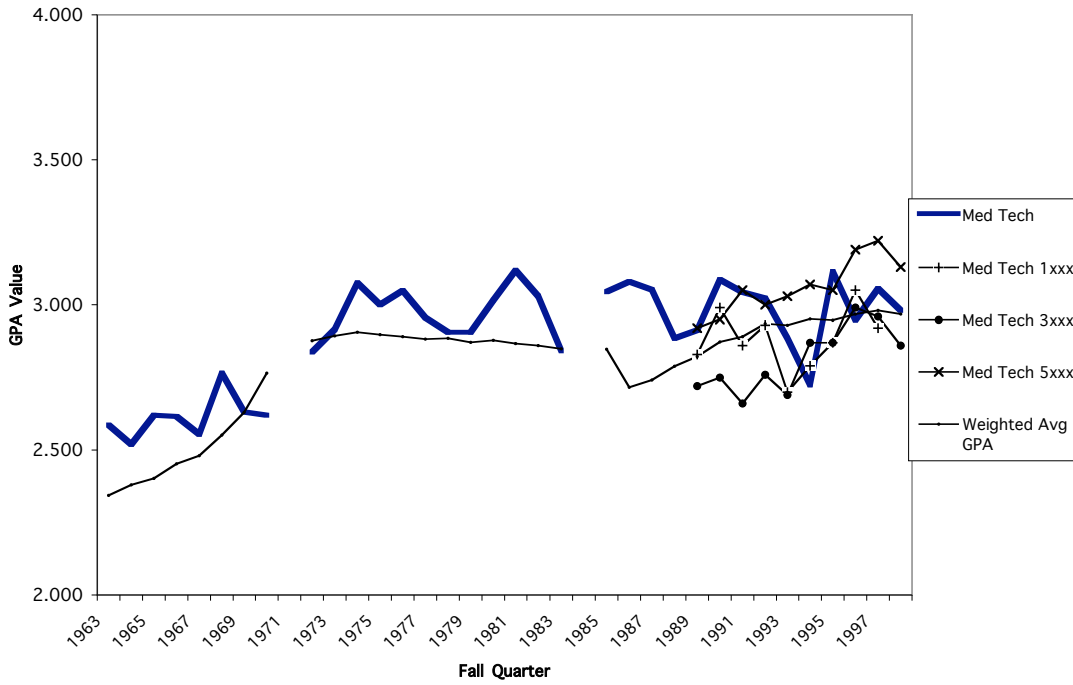
General College

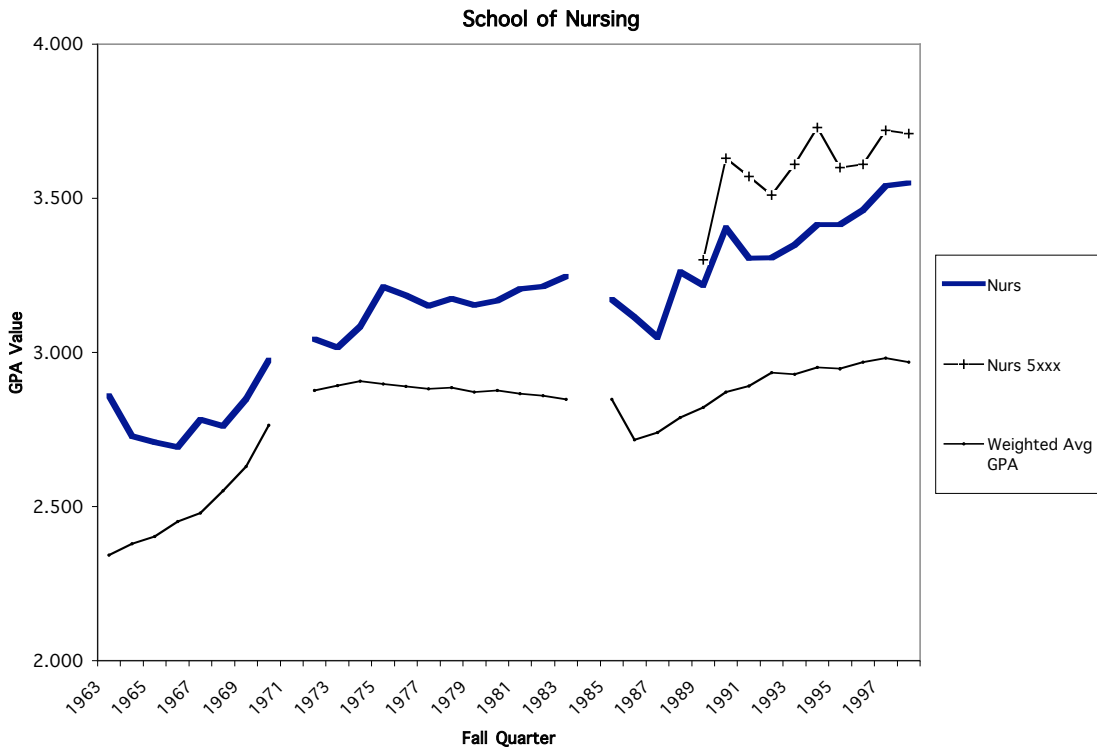
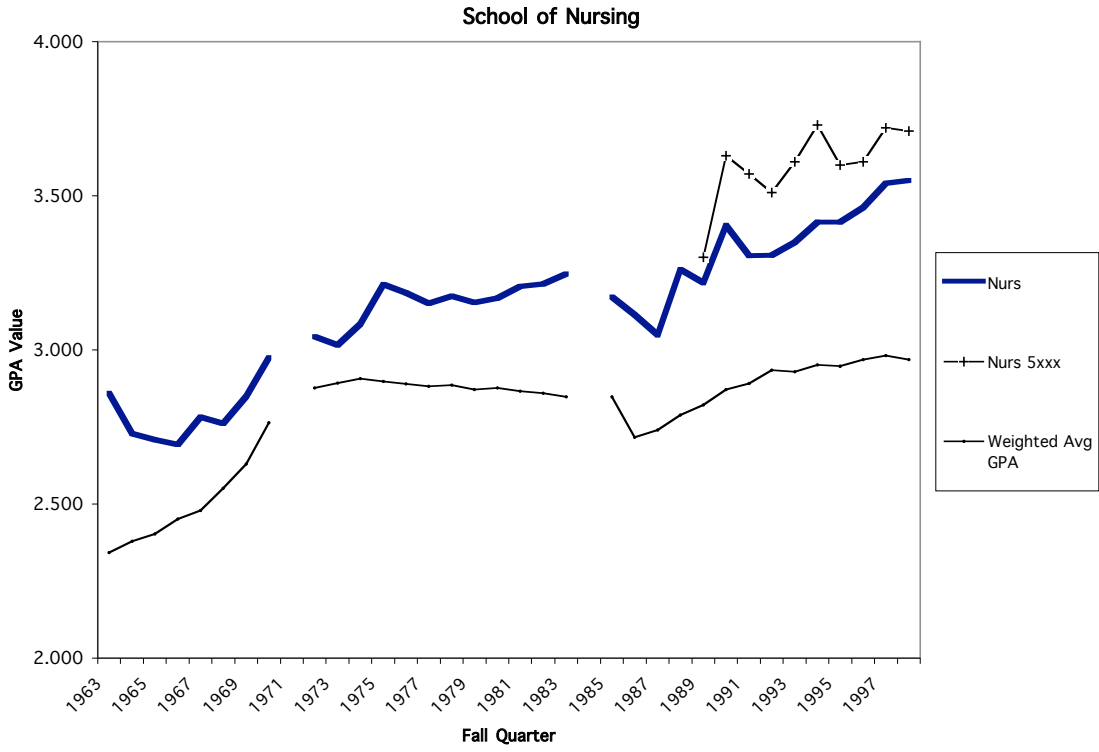


Mortuary Science



Medical Technology





University College

