

# SCCM: Creating Conditional Tasks in a Task Sequence

---

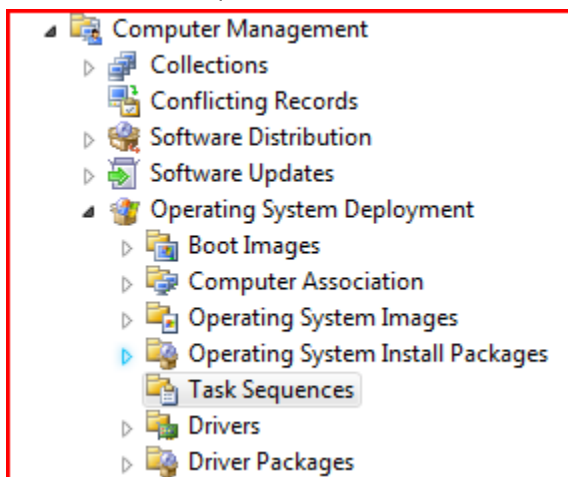
## Overview

This document will familiarize you with creating conditional tasks in a task sequence.

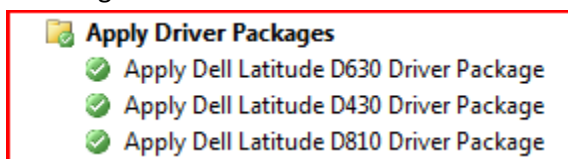
This document walks through creating conditional tasks for applying a driver package.

## Procedure

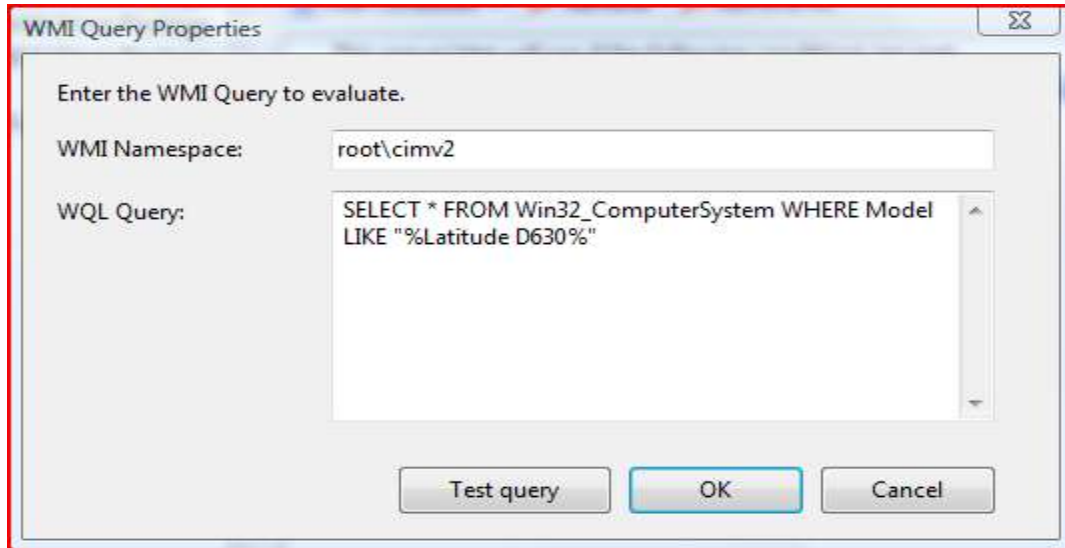
1. Launch the ConfigMgr console with an account that has sufficient rights to create a task sequence.
2. Go to the Task Sequences section of the console.



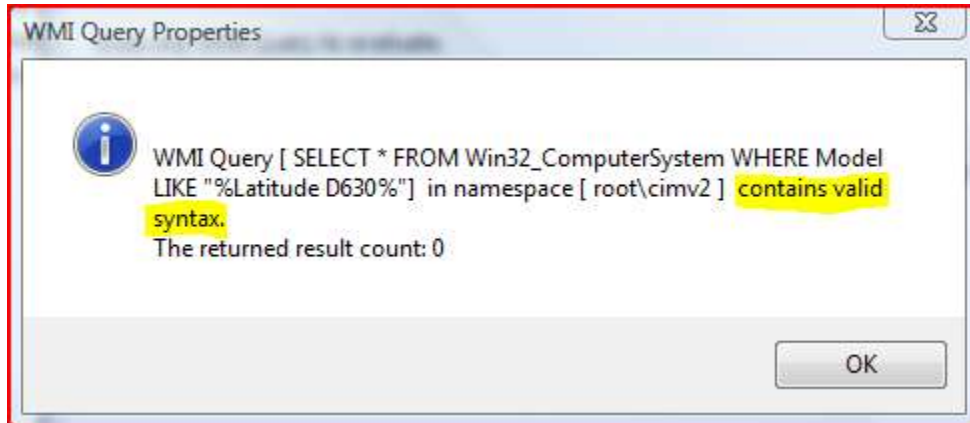
3. Create a new task sequence or edit one you have already created.
4. Create a new group in the task sequence after 'Apply Network Settings' and before 'Set up Windows and ConfigMgr', by going to **Add > New Group**. Give the group a descriptive name.
5. Under the group you just created create an 'Apply Driver Package' task by going to **Add > Drivers > Apply Driver Package**.
  - a. To create the task under the new group make sure that the group is selected before you go to Add.



6. On the Options tab of the task you just created go to **Add Condition > Query WMI**. Add the following query:
  - a. `SELECT * FROM Win32_ComputerSystem WHERE Model LIKE "%YOUR_MODEL%"`
    - i. It should look the image below.



7. Test your query using the 'Test query' button.
8. Make sure your test output states the query 'contains valid syntax'. See below:



9. Repeat steps 5 and 6 for each model.

**NOTE:** Using the apply driver package will install all \*.infs in that package. It **will not** install \*.exe drivers. These must be installed in another task.

**NOTE:** Check to make sure if you have 2-tier drivers they install. These may require a separate task.