

Graduate Education and the Graduate Student Experience

Board of Regents Work Session
February 7, 2008

Gail Dubrow, Vice Provost and Dean of
the Graduate School

Jerry Rinehart, Vice Provost for Student
Affairs

Today's Presentation

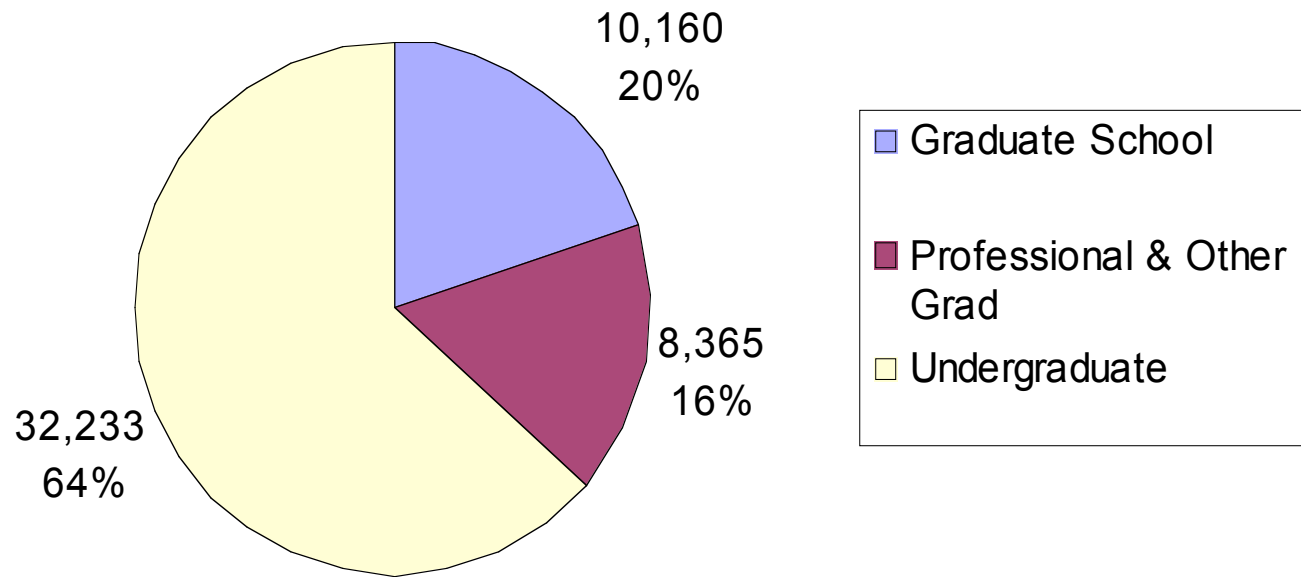
- Graduate school organization
- Graduate education (degree completion, recruitment, placement)
- Management of degree programs
- Student services and student affairs
- Financing graduate education
- A student's perspective

Policy Question

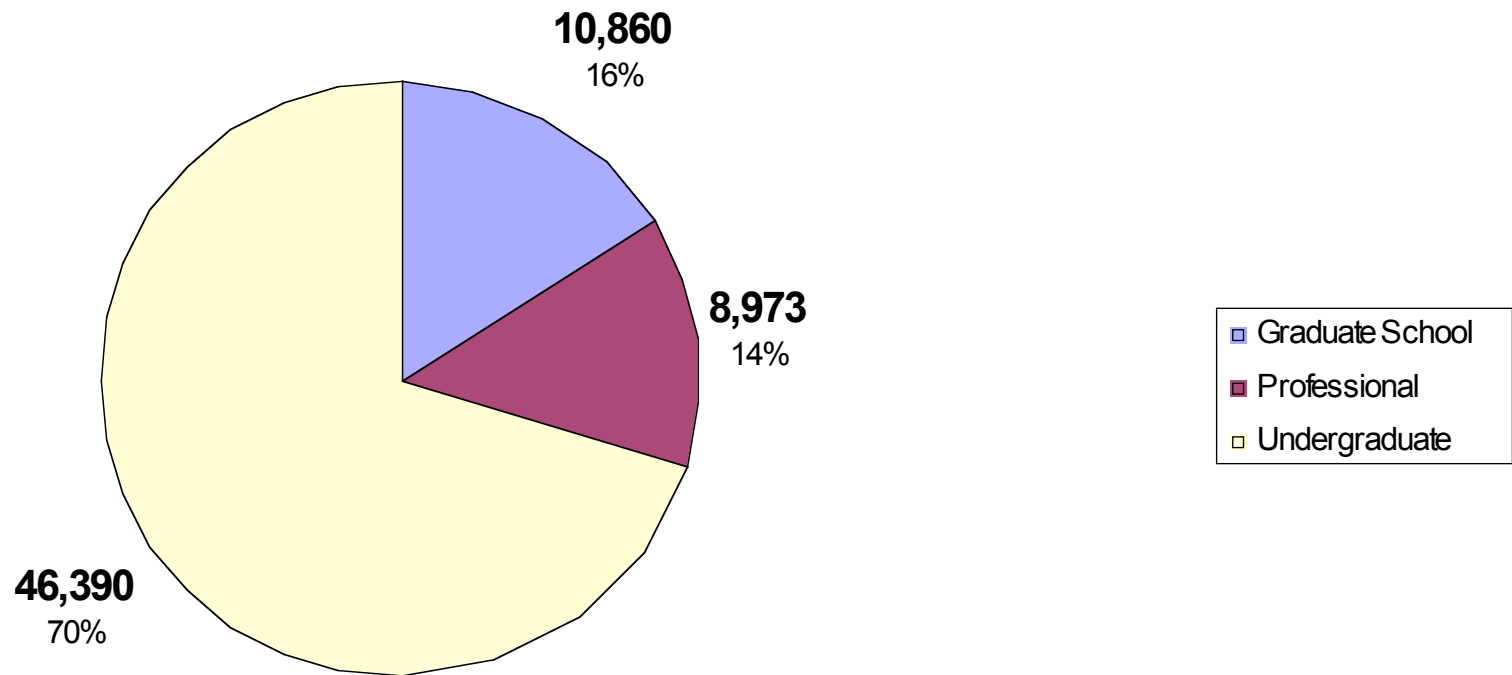
- Are we providing the appropriate levels of academic, intellectual, social, housing, and financial support for graduate students?

Implementation of Strategic Positioning

Twin Cities Enrollments Fall 2007



System-Wide Enrollments Fall 2007



Graduate School Enrollment

- 2000+ new students annually
- 26% of new students are international

Degrees granted 2006-07

- 1800 Masters Degrees
- 818 Doctoral Degrees
- 4th highest number of Ph.D.'s granted in U.S.

Graduate School Operations

- \$20-\$25 million budget
- 3600 graduate faculty
- Functions:
 - Admissions
 - Student Services
 - Communications
 - Office of Diversity
 - Fellowships
 - Office of Interdisciplinary Initiatives
 - Development

Strategic Investments

- Programmatic
 - HHH, Biological Sciences, Interdisciplinary Informatics
- Fellowships and Block Grants
- \$23M invested, including \$17M in fellowships and grants

Increases Since FY 06

- Diversity of Views and Experiences increased from \$300K to \$800K
- State allocation increased 115%
- Pool for departmental block grants increased 80%
- Research, Artistry and Scholarship grants increased 70%

Time to Degree

- UM masters degrees:
 - Shortest: 2.4 years Engineering and Health Sciences
 - Longest: 3.0 years Multi/Interdisciplinary Studies

Time to Degree (cont)

- UM Doctoral Degrees
 - Shortest: 5.0 Engineering
 - Humanities overall: 7.1 years
 - Longest: 10.3 Anthropology
9.5 Philosophy

Degree Completion

- UM Degree Completion Rate Project began with 2005-2006 cohort
- National average: 50% who start in a graduate program complete the degree

Improvement Strategies

- Sharing survey data with deans, chairs, and directors of graduate studies
- Multi-year financial support offered at admission
- Closer monitoring of degree progress
- Reform of programs to remove barriers to timely progress

Major Initiatives

- Admissions Initiative (in conjunction with Office for Equity and Diversity)
- Writing Initiative

Ensuring Program Quality: Key Criteria

- Quality
- Centrality
- Comparative Advantage
- Need (e.g. accreditation, competition etc.)
- Efficiency and effectiveness
- Potential for growth/leverage

Ensuring Quality Programs

- Mergers: e.g. History of Science, Technology and Medicine
- Discontinuations
- Program changes in process

Career Placement of Doctoral Students

- Cohort Tracking Initiative
 - Supported by UM Foundation and Institutional Reporting
- 21,666 Ph.D.'s granted since 1957

Follow up data available for 35% of 21,666 total

- 31% working as faculty in higher education
 - 51% of these at other doctoral universities
 - In the 1995-2005 cohort, 43% at doctoral degree granting universities

Follow up data (cont)

- 69% not currently working as faculty
- Of these:
 - 60% working in Education Services
 - 18% in Science, Engineering, Computer fields

Student Services and Student Affairs

Housing

- 95% live off-campus in private housing
- On campus options: Commonwealth Terrace Cooperative, Como Student Community Cooperative
- Expansion of University-sponsored housing under consideration

Physical Health: Insurance

- 50% of graduate students are insured by University-sponsored plans
- 25 – 30% of graduate students have non-university insurance coverage
- About 20 – 25% of graduate students are uninsured

Physical Health: Insurance

- High deductibles are issue in private plans
- Student Health Benefit Plan
 - \$782 per semester
- Graduate Assistant Plan
 - Department pays from 95% of premiums for 50% + appointment to 47.5% for 25% appointment

Physical Health

- Graduate/professional students constitute 52% of all Boynton Health Service visits
- 47% of professional students and 40% of graduate students have used campus Recreational Sports facilities in the past 12 months

Mental Health: Survey Data

In the past 12 months experienced:	Grad/Prof	Undergrad
Anxiety	11.5%	8%
Depression	9.4%	7.8%
Panic Attacks	5.1%	3.7%

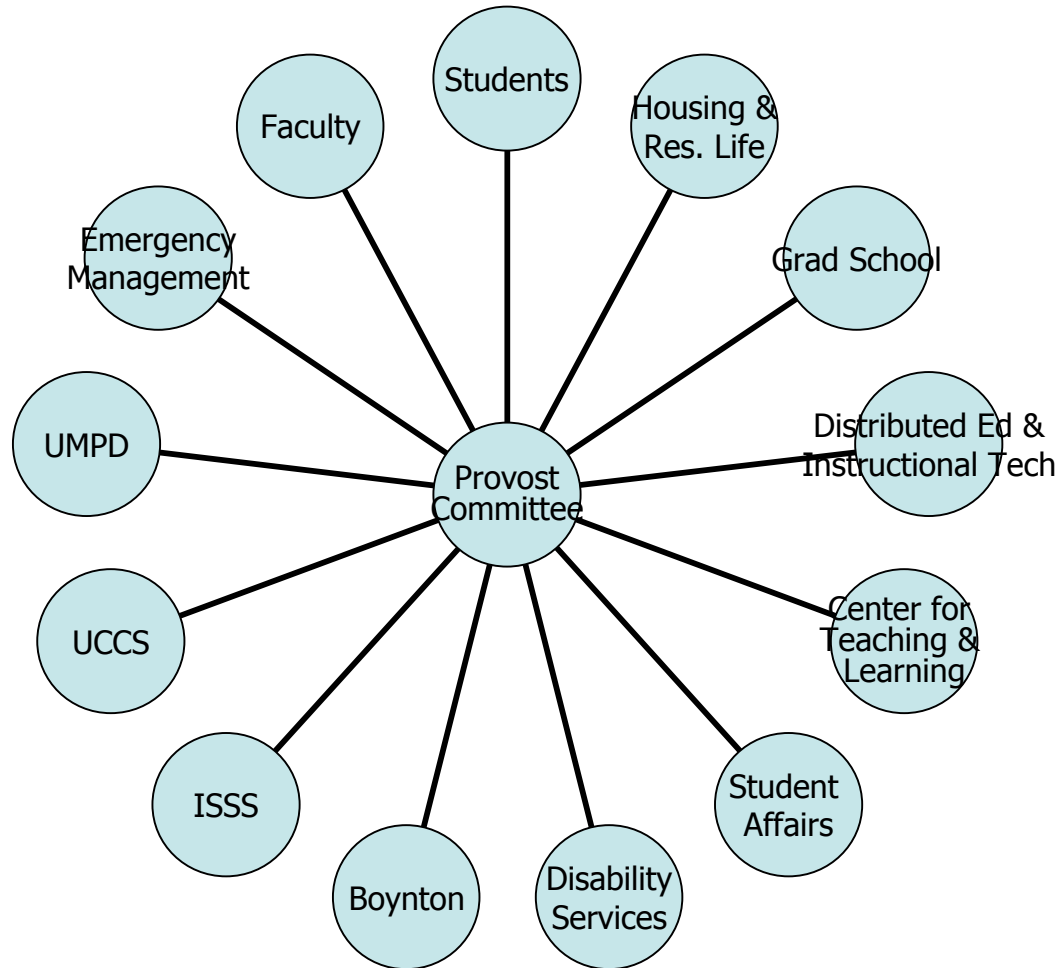
Mental Health: Survey Data (cont)

Currently:	Grad/Profess	Undergrad
Meds for depression	9.2%	5.5%
Meds for other mental health condition	5.8%	4.6%
Seeing mental health practitioner	9.1%	5.8

Mental Health (cont)

- Graduate students constitute 22% of University Counseling and Consulting visits
- 70% of graduate students seeking assistance through Disability Services have psychiatric disability as primary or secondary disability

Provost's Committee on Student Mental Health



Work and Finances

- 82% employed: 43% working 30+ per week
- 14% are parents or guardians

Most important financial resources:

- Loans 36%
- Work/Assistantships 34%
- Scholarships/grants 21%
- Parents/relatives 8%

Average Indebtedness at Graduation

Masters	\$28,813
Doctoral	\$34,949
JD	\$78,525
MD	\$122,517

Additional Student Experience Data

- Overall satisfaction with academic experience increased from 4.3 in 1991 to 4.95 in 2006
- 90% indicate they would chose the UM again if starting over

Graduate School Financial Support

- 3075 Teaching Assistantships
- 3205 Research Assistantships
- 121 Administrative Fellows

Top tier students

- Successfully matriculate 25% of offers
- Package includes two-year fellowship plus departmentally based teaching or research assistantship

Next Tier

- 42% matriculation rate
- Package includes one year fellowship and departmentally based teaching or research assistantship

New Plan for FY 09 Forward

- Three year fellowship to top tier students
- Student determines when to use over five year period
- Package includes departmentally-based offers of teaching or research assistantships
- *Annual value competitive with top public and research universities*

A Student Perspective

- Adam Johnson, doctoral student in neuroscience

Policy Question

- Are we providing the appropriate levels of academic, intellectual, social, housing, and financial support for graduate students?

Graduate School International Enrollments

Unit	Intern. Enrollment	%	% change since 1997
Institute of Technology	1086	41%	27%
College of Liberal Arts	453	21%	10%
Food, Agr & Nat Res Sci	208	27%	18%
Educ & Human Devel	205	13%	29%
Carlson, Sch of Mgmt	178	29%	141%
Medical School	136	19%	27%
College of Biol Sciences	101	23%	91%
School of Public Health	80	25%	167%
Swensen Sci/Eng UMD	71	36%	103%
College of Pharmacy	54	49%	10%
College of Vet Medicine	43	41%	-12%
Humphrey Publ Aff	41	8%	242%

Professional School Enrollment Fall 2007

Vet Med	370
Dent	426
Law	797
Med	1593
Pharm	430

Other Graduate Enrollments

CSOM	2030
EHD	1190
Nursing	79
PubH	525
CFANS	44
CAH	34
CCE	18
Other Grad Total	3920

Twin Cities Degree Seeking Fall 2007 Non Undergradu Enrollments

